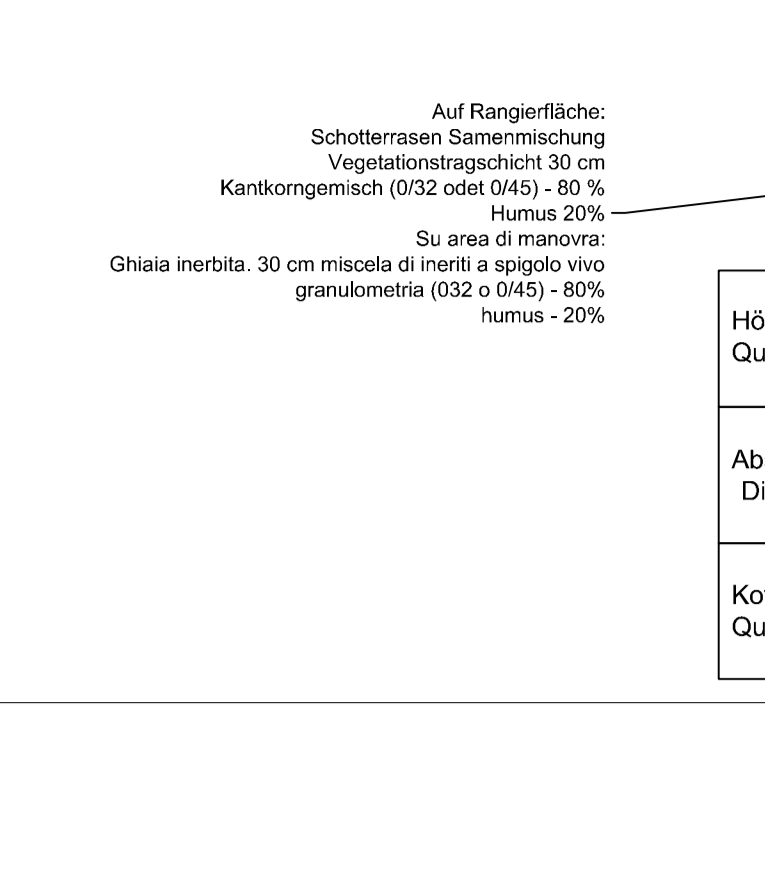
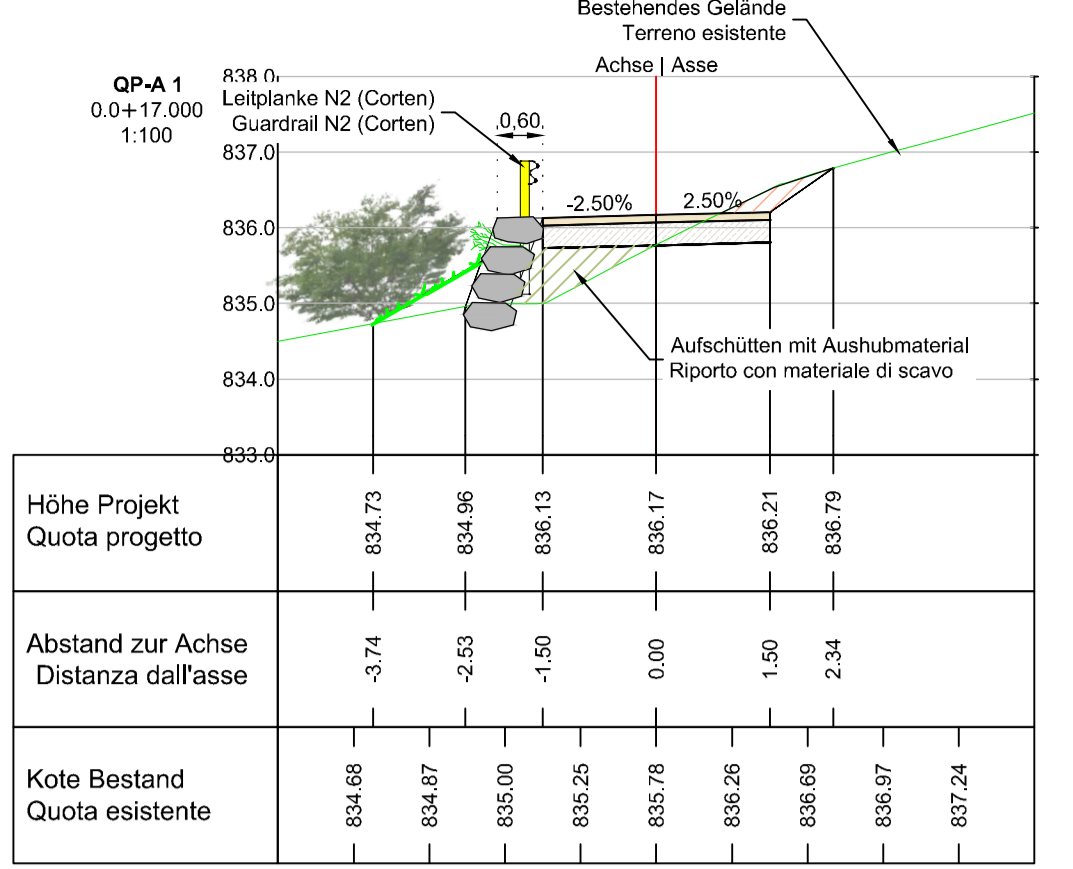
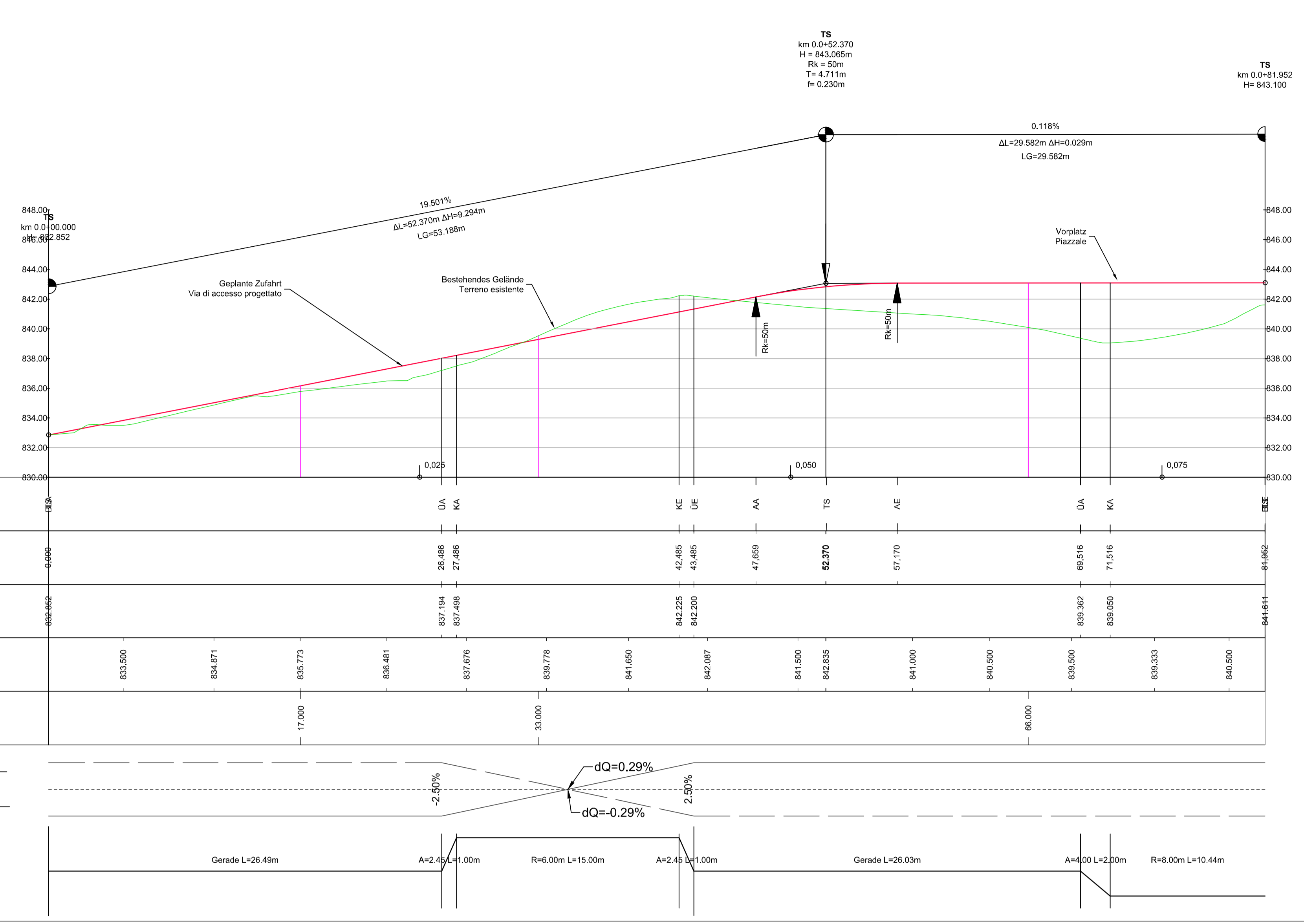
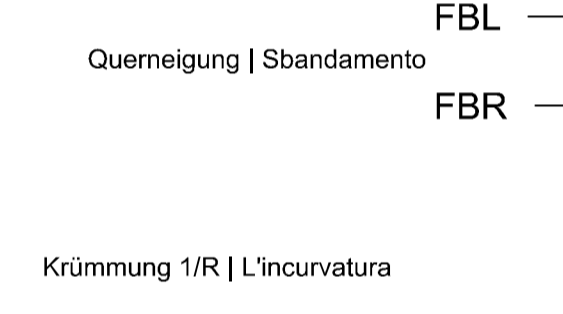


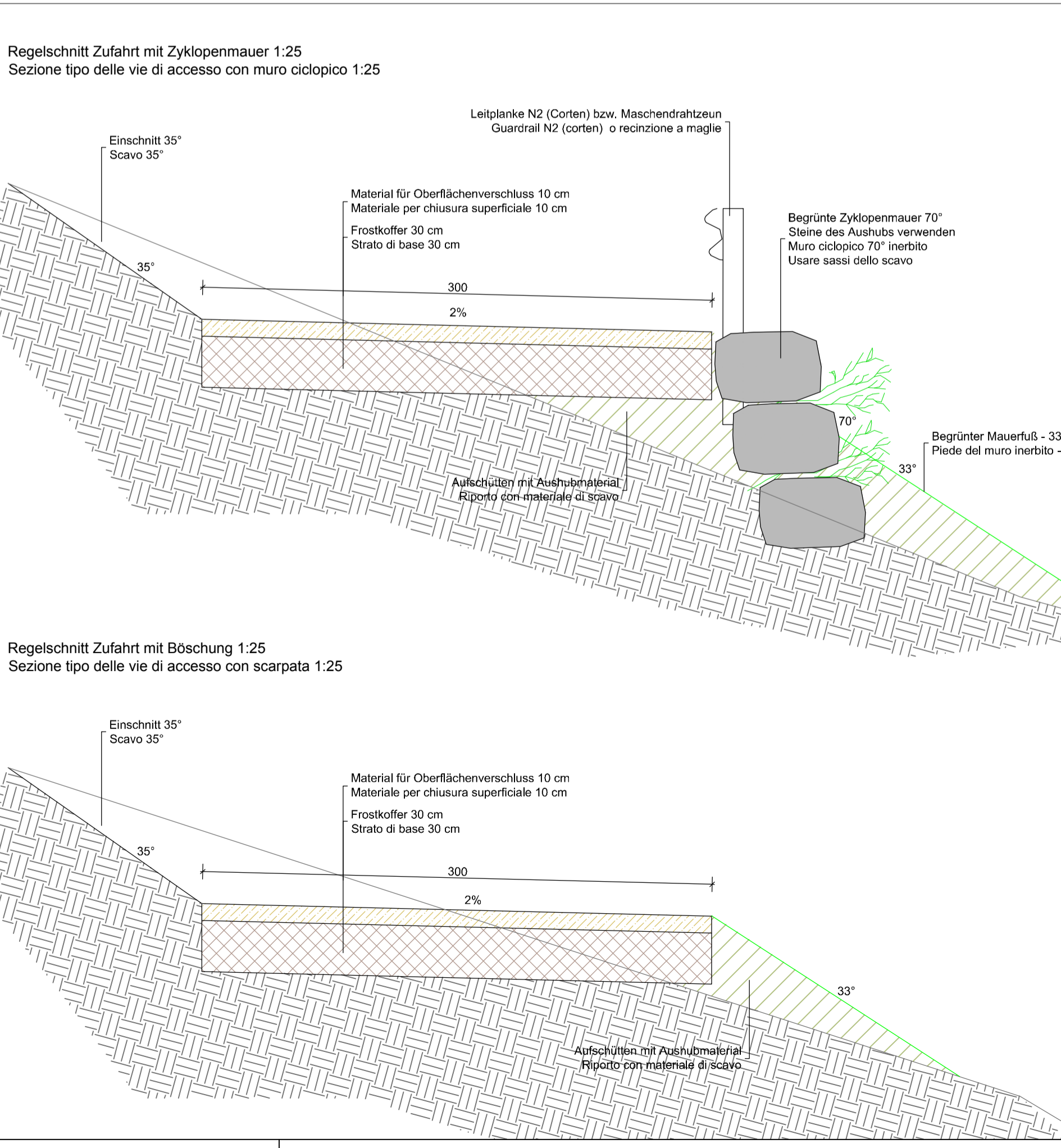
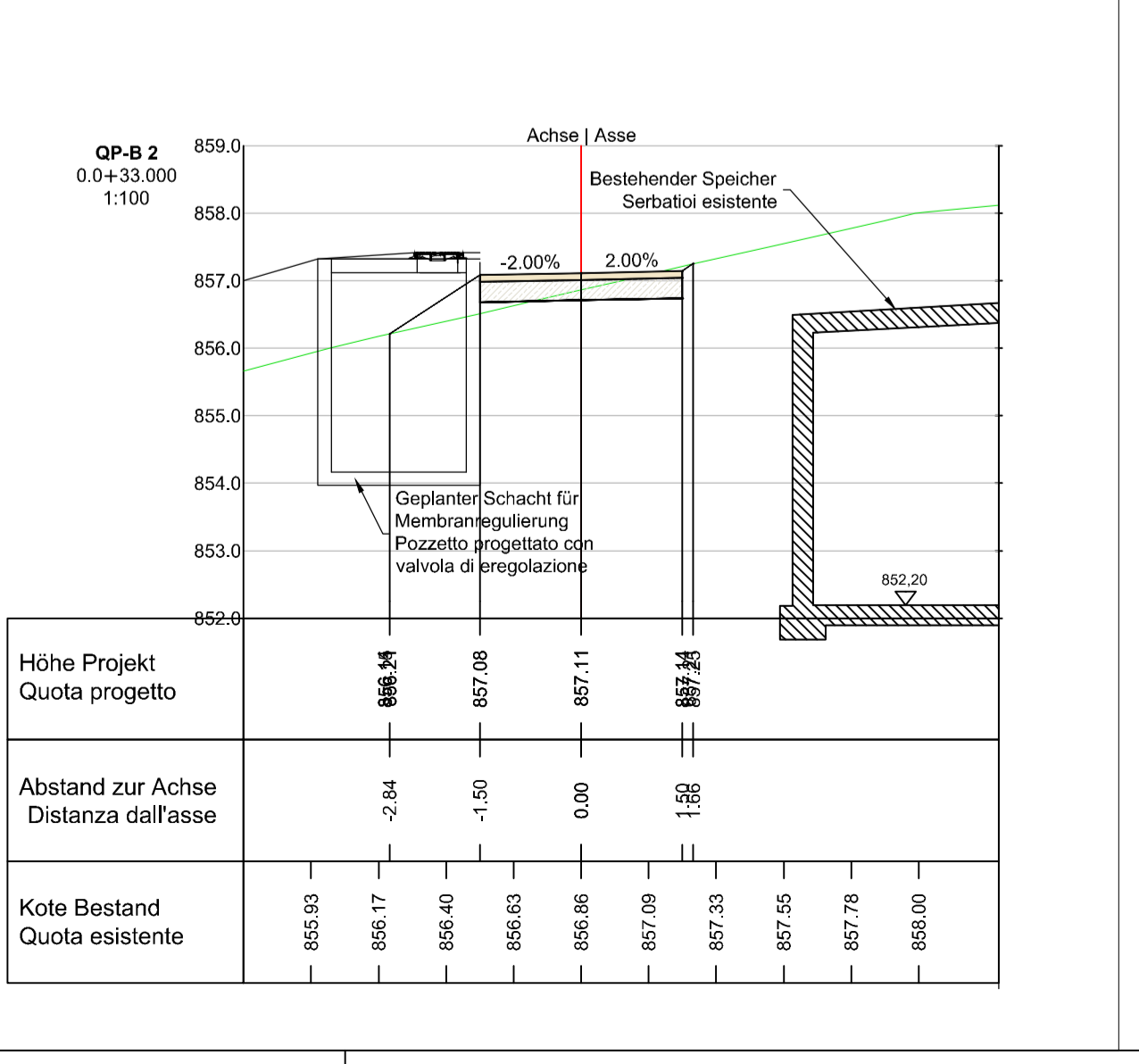
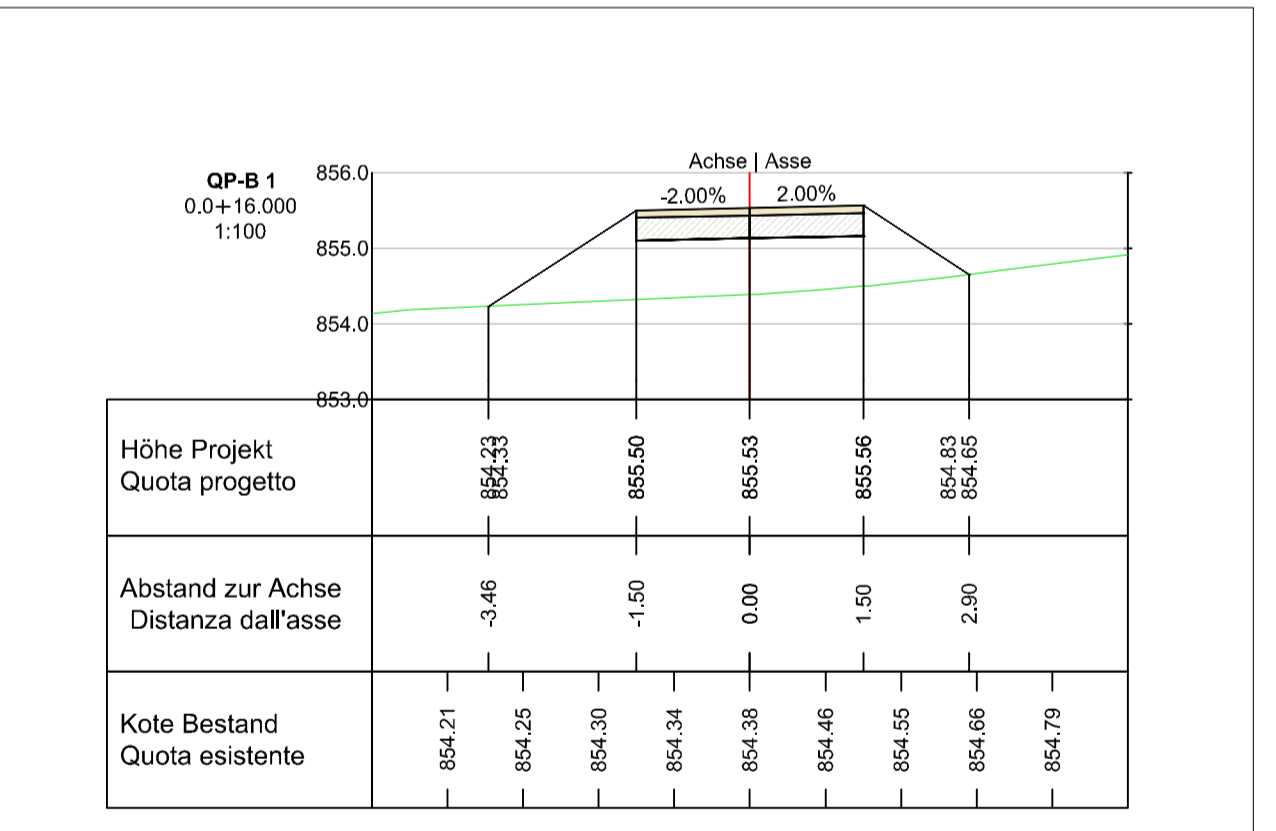
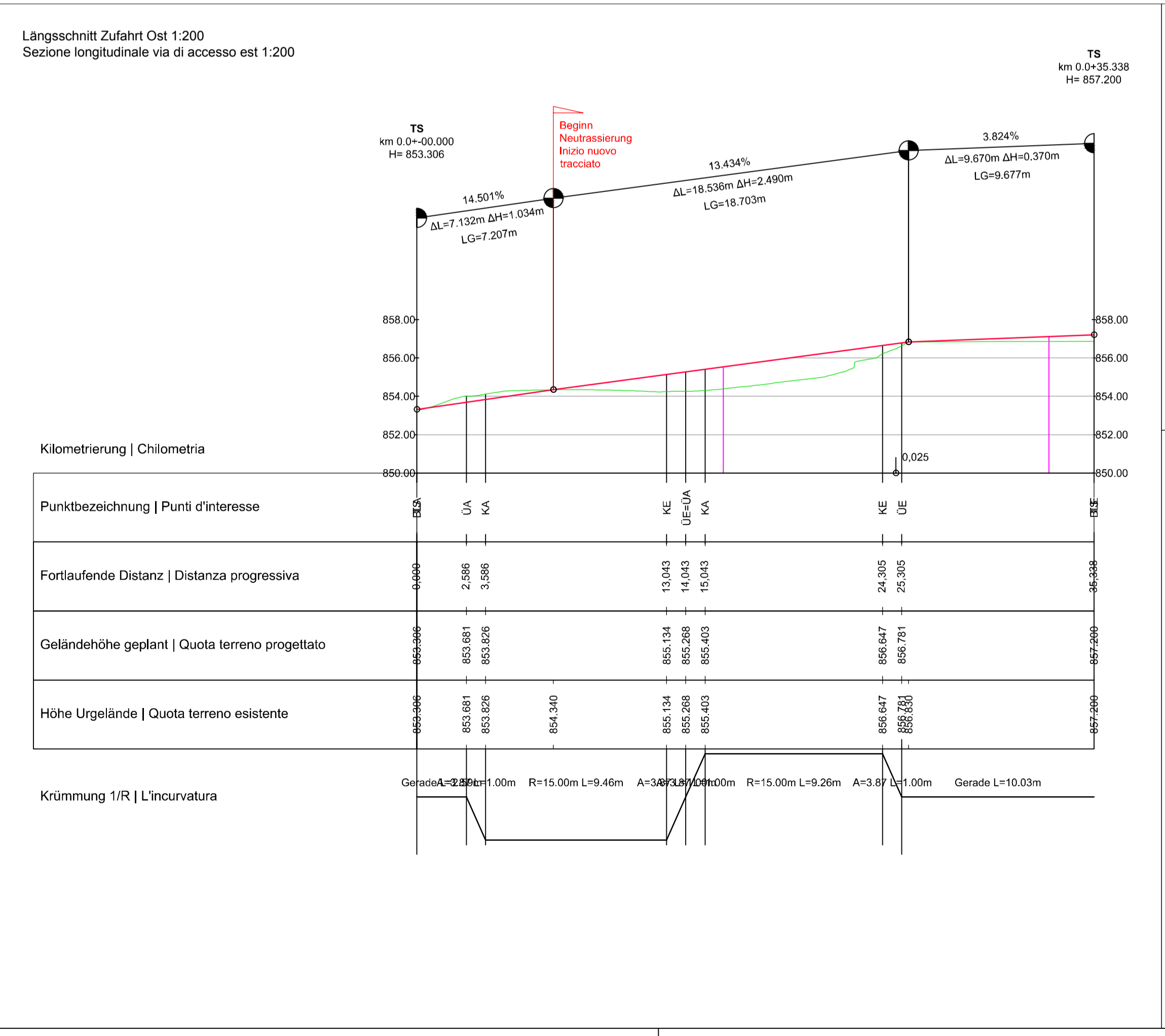
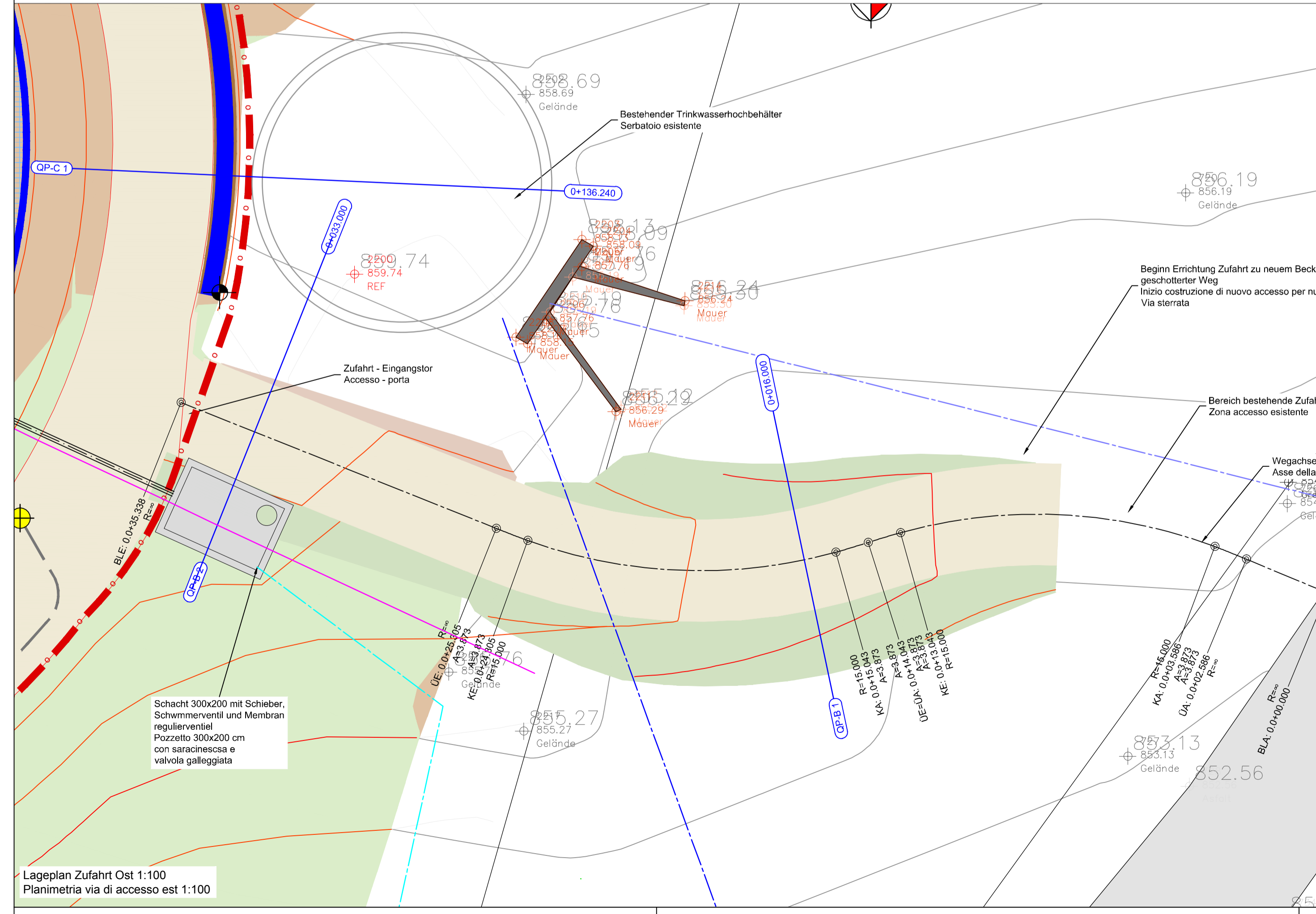
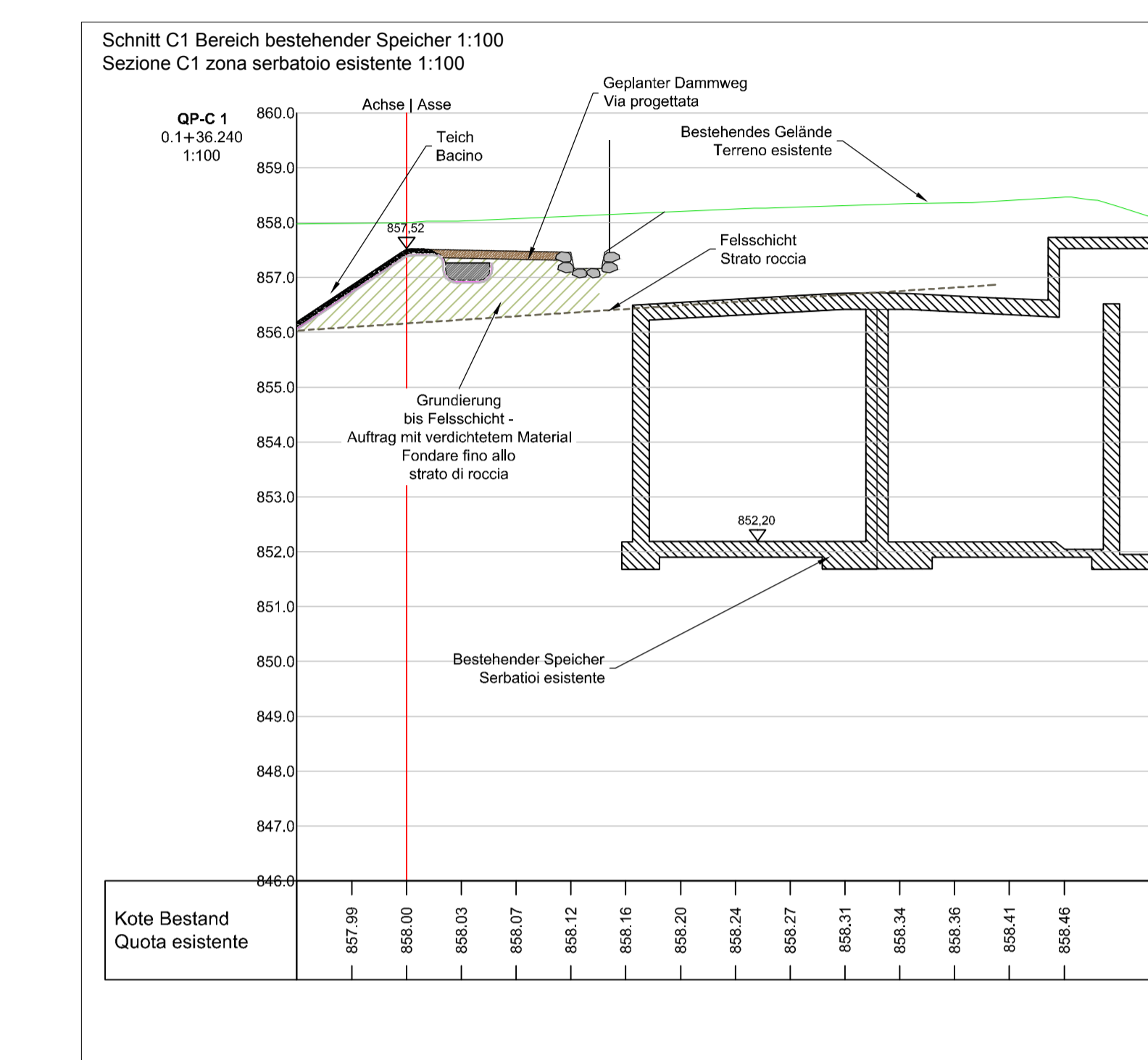
Längsschnitt Zufahrt West 1:200
Sezione longitudinale via di accesso ovest 1:200

Kilometrierung | Chilometria

Punktbezeichnung Punti d'interesse	UA	KA	KE	UE	AA	TS	AE	UA	KA
Fortlaufende Distanz Distanza progressiva	26,865	27,868	42,665	43,865	47,859	52,370	57,170	69,516	71,516
Geländehöhe geplant Quota terreno progettato	837,194	837,749	842,225	842,230	842,267	841,500	842,835	839,362	839,050
Höhe Urgelände Quota terreno esistente	833,500	834,671	835,773	836,881	837,676	839,778	841,650	842,267	841,000
Profilnummer und Station Nr. profilo e stazione	17,000	17,000	20,000	20,000	20,000	26,030	26,030	33,333	33,333



Höhe Projekt Quota progetto	839,41	839,45	839,49	839,54	839,58	839,62	839,61	839,59	839,57	839,55	839,53	839,51	839,49	839,47	839,45
Abstand zur Achse Distanza dall'asse	-10,35	-10,27	-10,19	-10,11	-10,03	-9,95	-9,87	-9,79	-9,71	-9,63	-9,55	-9,47	-9,39	-9,31	-9,23
Kote Bestand Quota esistente	839,41	839,45	839,49	839,54	839,58	839,62	839,61	839,59	839,57	839,55	839,53	839,51	839,49	839,47	839,45



GEMEINDE NATZ-SCHABS
AUTONOME PROVINZ BOZEN

COMUNE DI NAZ-SCIAVES
PROV. AUTONOMA DI BOLZANO

**SPEICHERBECKEN IN AICHA
NATZ-SCHABS**

**BACINO DI RACCOLTA A AICA,
NAZ-SCIAVES**

**AUSFÜHRUNGSPROJEKT
PROGETTO ESECUTIVO**

Projekt: Bodenverbesserungskonsortium Aicha I-39040 Natz-Schabs

Committer: Consorzio di miglioramento Aicha I-39040 Natz-Schabs

Plan-Nr. tavola:	Zufahrten Vie di accesso	Maßstab / Scala:
AP-0403-r02	Lageplan Planimetria	1:200/1:100
Projekt Nr. Progetto:	Schnitte Sezioni	1:100
IN-12-560	Regelschnitte Sezioni di tipo	1:25

4			
3			
2	Anpassungen laut Amt für Landschaftsschutz	24.01.2018	SZ RB
1	Anpassungen laut Amt für Landschaftsschutz	11.10.2017	SZ RB
0	Erstellung - Elaborazione	20.07.2017	SZ RB

Der Planer / Il progettista:
Dr. Ing. Rudi Bertagnoli

in.ge.na.
ingegneria - geologia - natura - pianificazione
Via Marconi, 6 - Nanzoson
Tel.: +39 0471 342750
e-Mail: office@ingena.info