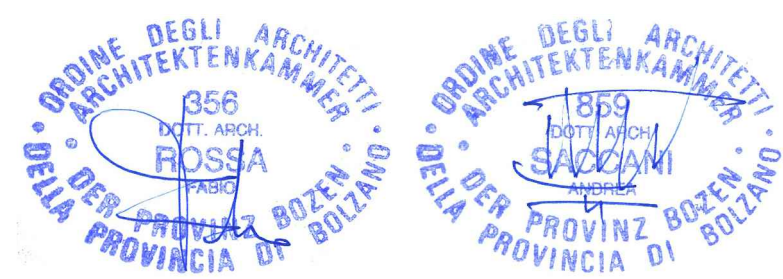


PROGETTISTA-PROJEKTANT:



COMUNE DI - GEMEINDE: **BOLZANO - BOZEN**
PROVINCIA DI - PROVINZ: **BOLZANO - BOZEN**

PROGETTO - PROJEKT: 102/2012 del 20.05.16
 Variante alle Concessioni Edilizie 2016/150/0 del 20.05.16
 Via Buozzi - P.ed. 3327, 3328 e 3977- C.C. Dodiciville

COMMITTENTE-BAUHERR: **ASPIAG SERVICE s.r.l.**
Via Buozzi Str., n°30 - 39100 Bolzano (BZ)

DATA-DATUM: 26.05.2016
REVISIONI - DURCHSICHT:

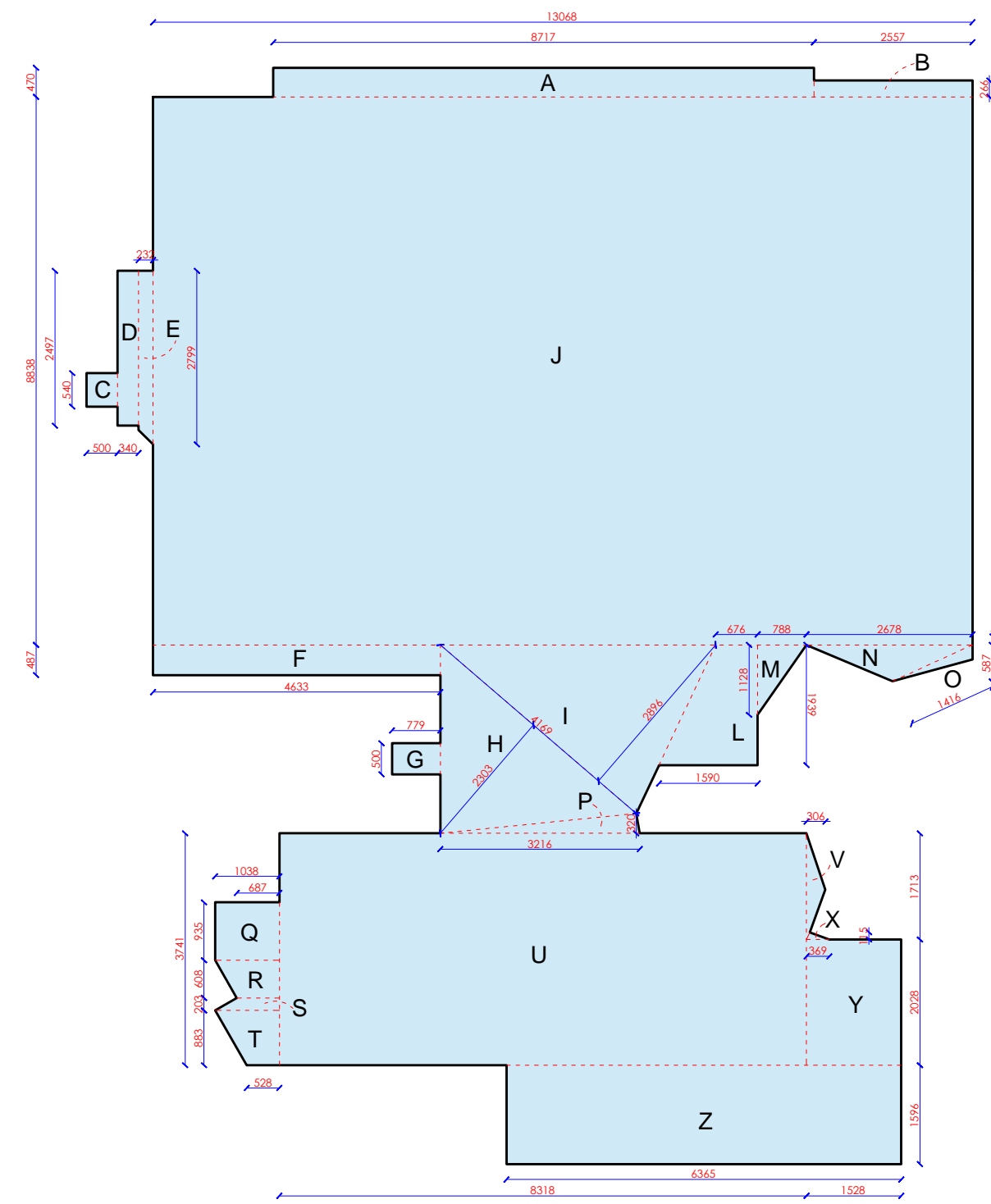
OGGETTO-OBJEKT: **PROGETTO CALCOLO CUBATURA**

SCALA-MASS: 1:1000
CODICE COMMISSA:

TAV:

Cubat. 01

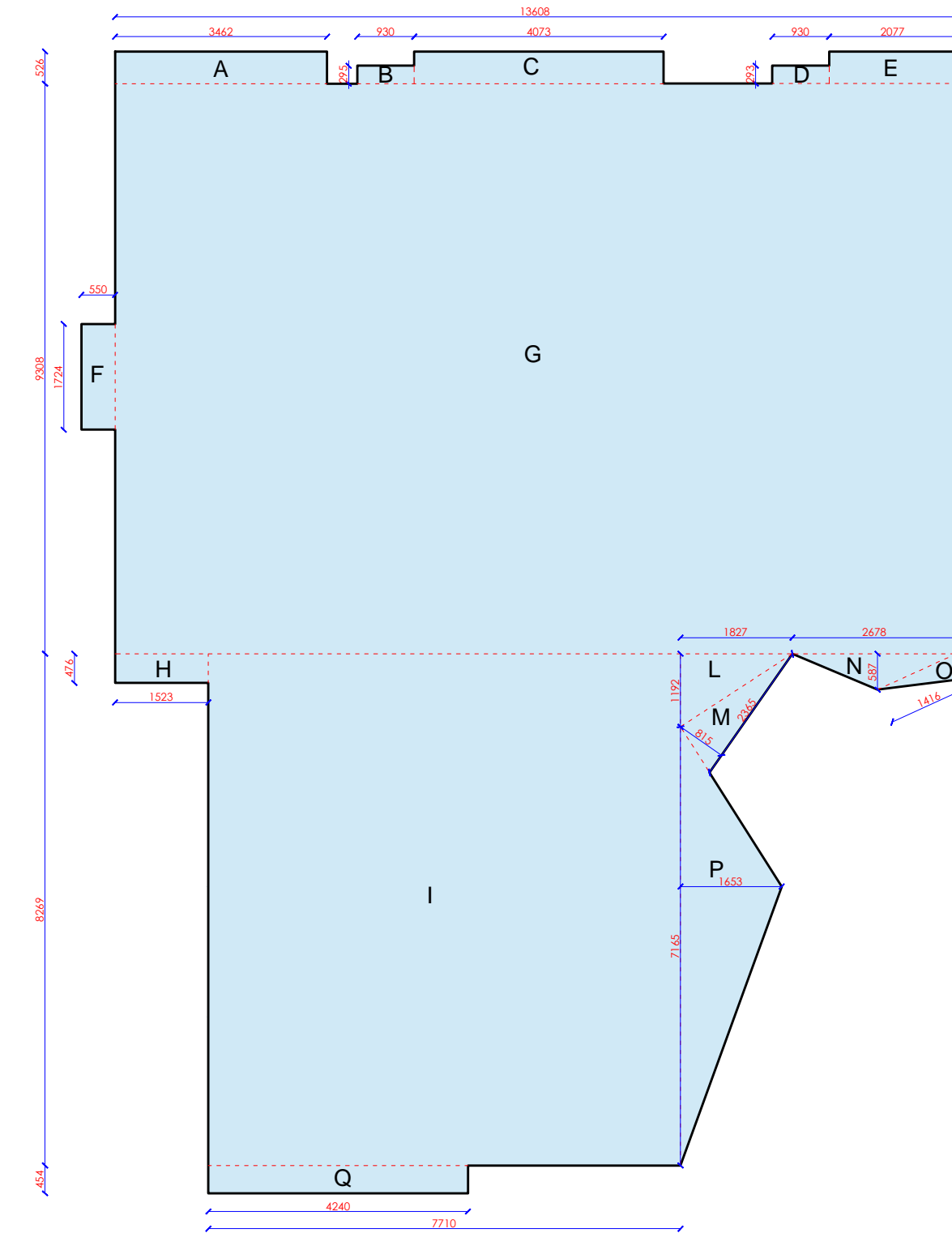
PIANO TERRA (h=5.50m)



PIANO TERRA

A=	87,17*4,70 =	409,70mq
B=	25,57*2,66 =	68,01
C=	5,40*5,00 =	27,00
D=	24,97*3,40 =	84,89
E=	(27,99+24,97)/2*2,32 =	61,43
F=	46,33*4,87 =	225,62
G=	7,79*5,00 =	38,95
H=	41,69*23,03/2 =	480,00
I=	41,69*28,96/2 =	603,67
J=	130,68*88,38 =	11.549,50
L=	(15,90+6,76)/2*19,39 =	219,68
M=	7,88*11,28/2 =	44,44
N=	26,78*5,87/2 =	78,59
O=	14,16*2,16/2 =	15,29
P=	32,16*3,20/2 =	51,45
Q=	10,38*9,35 =	97,05
R=	(10,38+6,87)/2*6,08 =	52,44
S=	(10,38+6,87)/2*2,03 =	17,50
T=	(10,38+5,28)/2*8,83 =	69,13
U=	83,18*37,41 =	3.111,76
V=	17,13*3,06/2 =	26,20
X=	3,69*1,15/2 =	2,12
Y=	15,28*20,28 =	309,87
Z=	63,65*15,96 =	1.015,85
Totale		mq 18.660,14

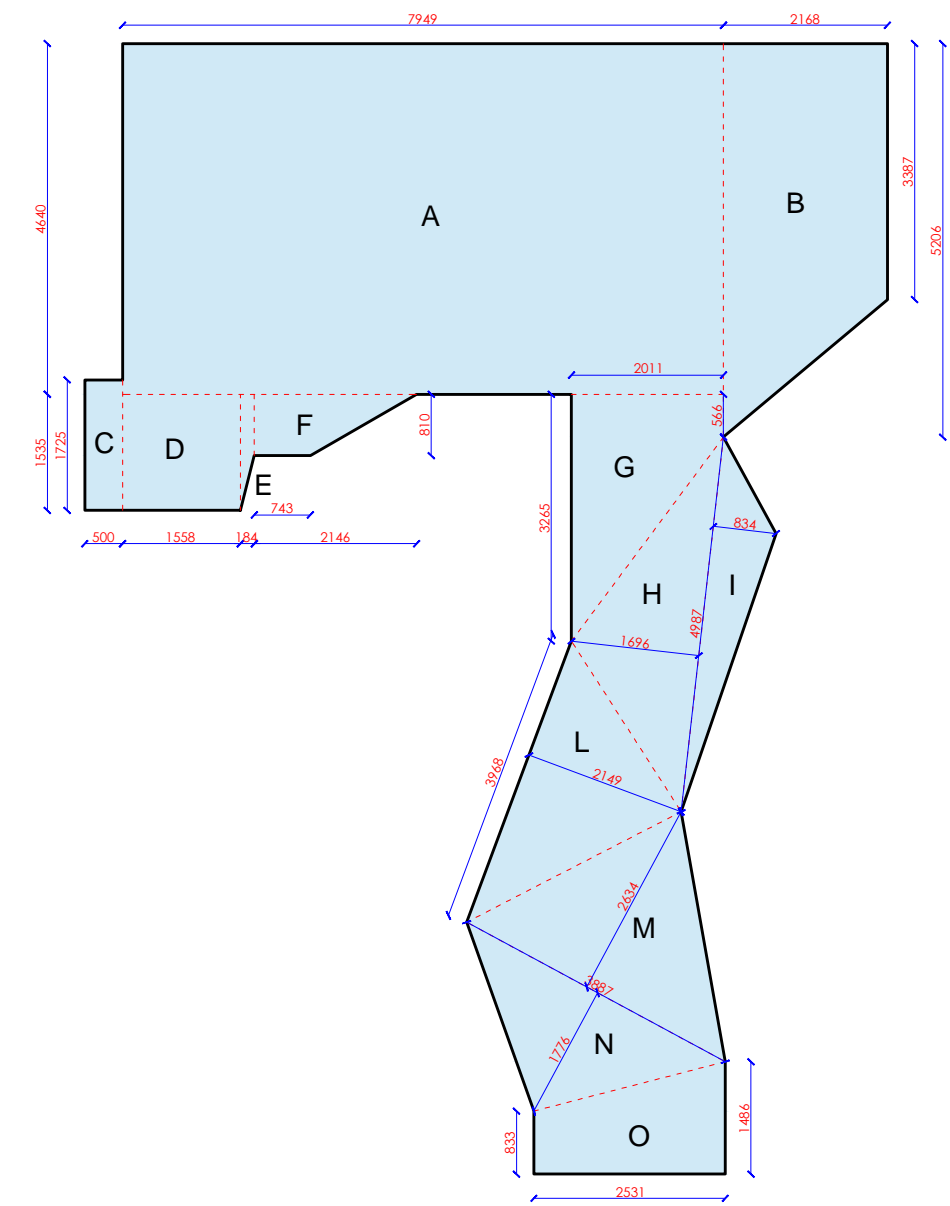
PIANO PRIMO (h=5.60m)



PIANO PRIMO

A=	34,62*5,26 =	182,10mq
B=	9,30*2,95 =	27,43
C=	40,73*5,26 =	214,23
D=	9,30*2,93 =	27,24
E=	20,77*5,26 =	109,25
F=	17,24*5,50 =	94,82
G=	136,08*93,08 =	12.666,32
H=	15,23*4,76 =	72,49
I=	82,69*77,10 =	6.375,40
L=	18,27*11,92/2 =	108,88
M=	23,65*8,15/2 =	96,37
N=	26,78*5,87/2 =	78,59
O=	14,16*3,88/2 =	24,47
P=	71,65*16,53/2 =	592,18
Q=	42,40*4,54 =	192,49
Totale		mq 20.865,26

PIANO SECONDO (h=3.60m)



PIANO SECONDO

A=	79,49*46,40 =	3688,33mq
B=	(52,06+33,87)/2*21,68 =	931,48
C=	17,25*5,00 =	86,25
D=	15,58*15,35 =	239,15
E=	(8,10+15,35)/2*1,84 =	21,57
F=	(7,43+21,46)/2*8,10 =	117,00
G=	(32,65+5,66)/2*20,11 =	385,20
H=	49,87*16,96/2 =	422,90
I=	49,87*8,34/2 =	207,95
L=	39,68*21,49/2 =	426,36
M=	38,87*26,34/2 =	511,91
N=	38,87*17,76/2 =	345,16
O=	(14,86+8,33)/2*25,31 =	293,46
Totale		mq 7.676,72

CUBATURA VENDITA AL DETTAGLIO

$(18.660,14*5,5)+(20.865,26*5,6)+(7.676,72*3,6)= 102.630,77+116.845,46+27.636,20 = \mathbf{247.112,43mc}$